



Redevelopment Agency of WEBER COUNTY



2021
Annual
Report





Weber County Clerk/Auditor
2380 Washington Blvd., Suite 320
Ogden, Utah 84401
Phone (801) 399-8400

November 1, 2021

This report has been prepared in accordance with Utah Code 17C-1-603 and contains information about the Weber County Community Reinvestment Agency. The Contents are as follows:

Section 1 – Overview and information about the agency’s project area.

Section 2 – Maps outlining the project area boundaries.

Section 3 – Detailed information of the yearly distribution to the agency.

SECTION 1

WEBER COUNTY PROJECT AREAS

The Weber County Community Reinvestment Agency currently has one active redevelopment project area. The **Summit-Eden @ Powder Mountain Community Development Project** was created in October of 2013 to help promote the expansion and recreational development of the Powder Mountain Ski Resort. The development vision anticipates 500 ski-accessible home sites connected to a village core that includes hotels, lodges, condominiums, retail, educational components and micro-conferencing. An extensive trail system is planned to incorporate year-round access for hiking, biking, snow-shoe and Nordic skiing.

BASE YEAR

Currently the Base Year for the project area is 875,062 which consists of real and personal property taxable value established from the 2012 tax role. NOTE: This base year amount changed from the original base year value due to a miscommunication about the inclusion of centrally assessed property. Adjustments were made to the first few years of TIF disbursements once an understanding of the centrally assessed issue was clarified.

ENTITY PARTICIPATION

The taxing entities participating in the project area include the Weber County Corporation and the Weber School District. The terms of the participation agreements are as follows:

Weber County Corporation – The Weber County Corporation will participate for 20 years. For the first 10 years the county will distribute 75% of its tax collection in the project area to the agency. The last 10 years the county will distribute 50% of its tax collection in the project area to the agency.

Weber School District – The Weber School District will participate for 20 years distributing 50% of its tax collection in the project area to the agency for the full 20 years.

INCREMENT FUNDING

Tax increment funds collected by the agency will be distributed to the project area’s development costs with stipulations on the use of those funds. Those stipulations are primarily limited to the development of infrastructure.

The project area began receiving tax increment in 2017 and the final year of distribution will include funds collected for the tax year 2036. There is no cap on the amount of funding during the lifetime of the project. An administrative fee of 2% on the tax increment collected from both participating entities will be paid to the agency but the amount will be deducted from the Weber County Corporation’s portion of increment.

PRIOR YEAR VALUES / ESTIMATED CURRENT YEAR VALUES

2020 Taxable Value:

Real	180,197,486
Personal	<u>7,226,651</u>
Total	187,424,137

2021 Estimated Taxable Value:

Real	189,109,532
Personal	<u>6,686,852</u>
Total	195,796,384

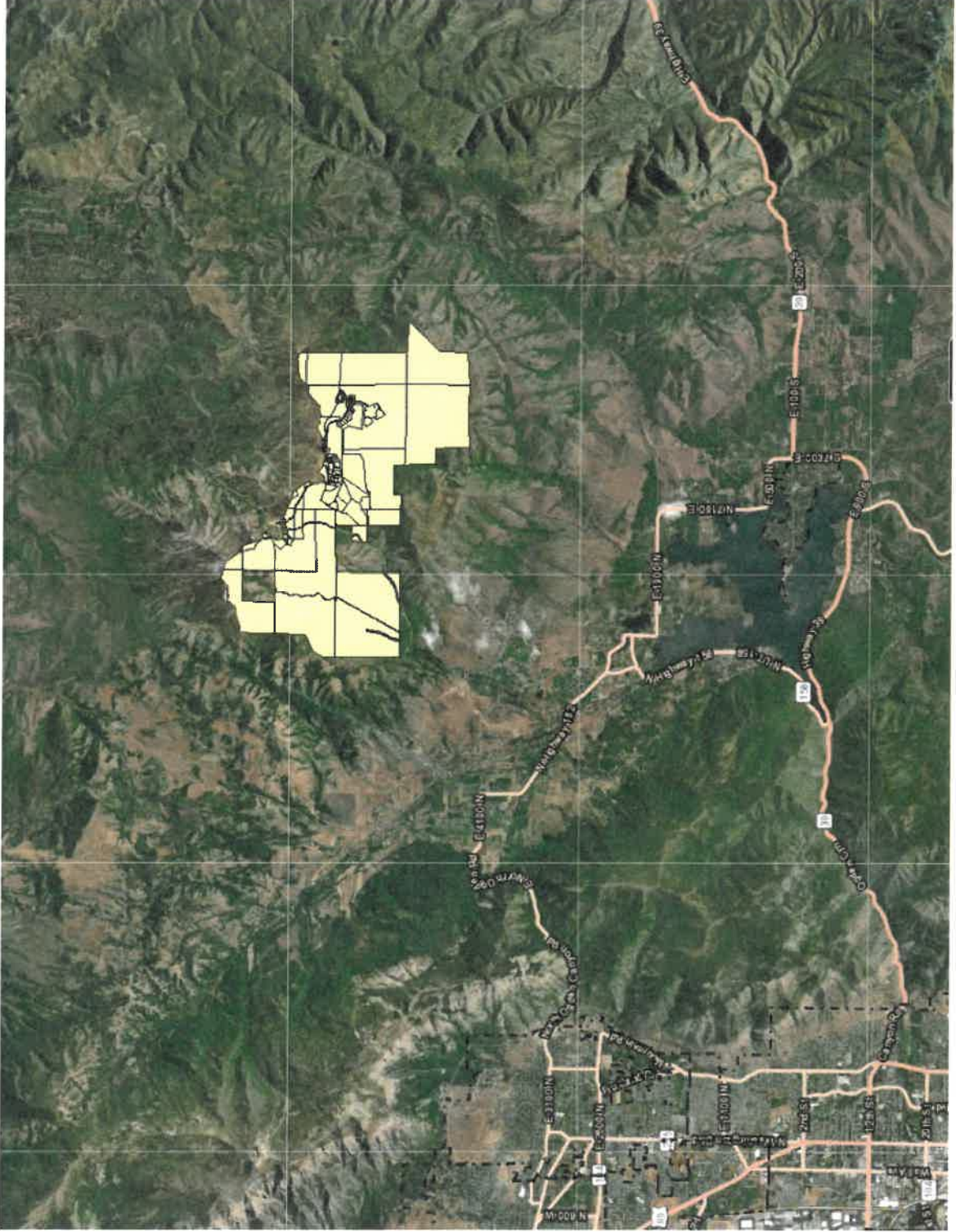
This represents an increase of 4.47% and is attributed to new development and rising property values.

FUNDS RECEIVED BY THE AGENCY

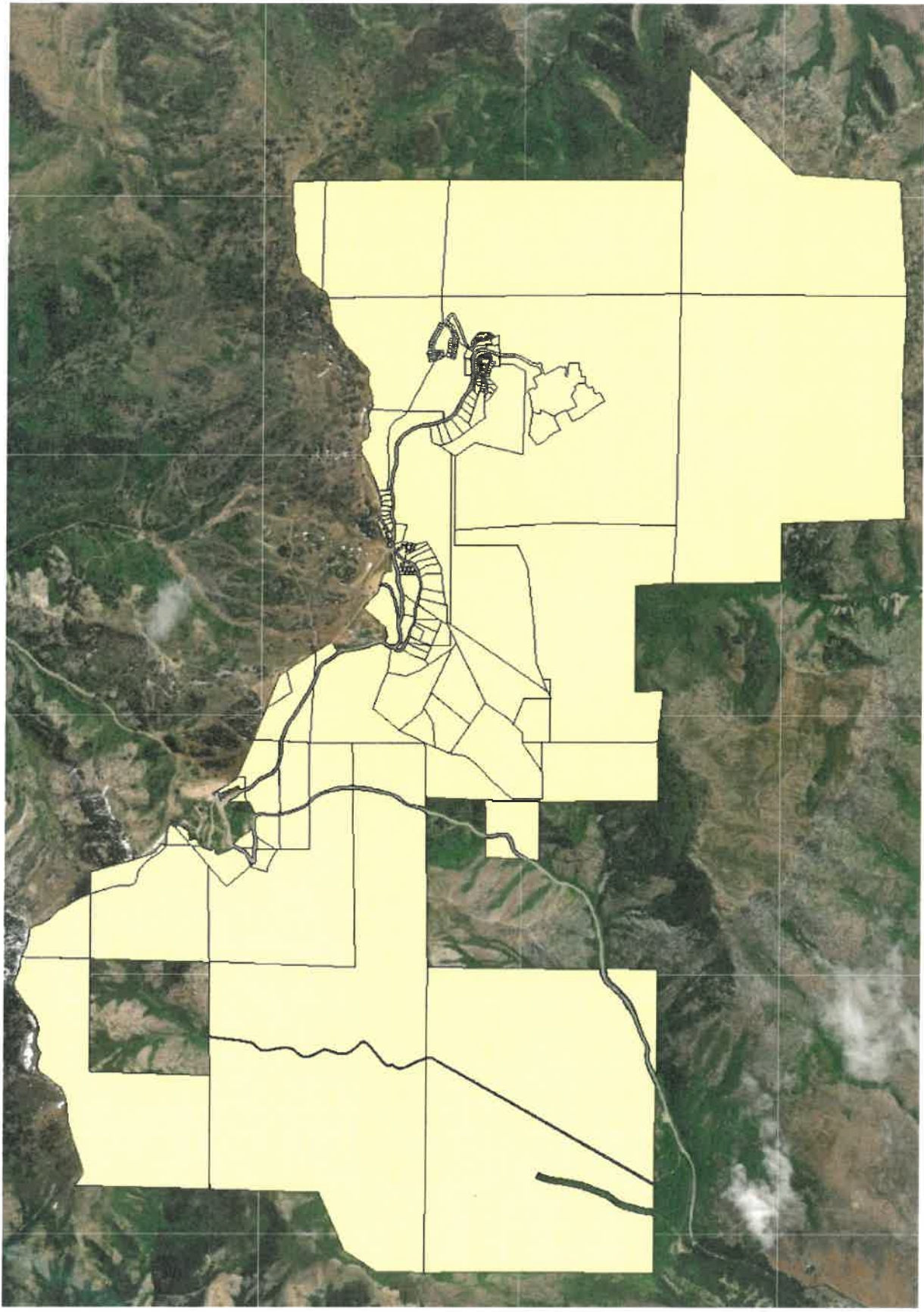
Attached are detailed reports showing the yearly funds distributed to the Weber County Reinvestment Agency for the Summit-Eden @ Powder Mountain Community Development Project.

SECTION 2

Summit-Eden @ Powder Mountain Community Development Project Area Map



Summit-Eden @ Powder Mountain Community Development Project Area Map



SECTION 3

2017

Tax Area	Buy In	Real Value	Real Base	State Value	State Base	Net Real Value	CY Rate	Total Real	Unsec Value	Unsec Base	Net Unsec Value	PY Rate	Unsec Total
127 Weber County Redevelopment Summit-Eden													
1 Weber County General Fund	488	75%	14,986,069	125,360	157,602	11,263,733	0.002277	25,647.52	0	0	-	0.001910	\$ -
2 Weber County G O Bond Fund	488	75%	14,986,069	125,360	157,602	11,263,733	0.000262	2,951.10	0	0	-	0.000269	\$ -
3 Library	488	75%	14,986,069	125,360	157,602	11,263,733	0.000578	6,510.44	0	0	-	0.000597	\$ -
5 Weber School District	488	50%	14,986,069	125,360	157,602	7,509,156	0.006298	47,292.66	0	0	-	0.006693	\$ -
137 Charter School Weber	488	50%	14,986,069	125,360	157,602	7,509,156	0.000075	563.19	0	0	-	0.000000	\$ -
6 Statewide School Basic Levy	488	50%	14,986,069	125,360	157,602	7,509,156	0.000000	-	0	0	-	0.000000	\$ -
38 Weber / Morgan Health	488	75%	14,986,069	125,360	157,602	11,263,733	0.000095	1,070.05	0	0	-	0.000079	\$ -
55 Paramedic Fund	488	75%	14,986,069	125,360	157,602	11,263,733	0.000148	1,667.03	0	0	-	0.000157	\$ -
127 Weber County Redevelopment Summit-Eden													
1 Weber County General Fund	489	75%	1,286	75,581	1,100,238	444,862	0.002277	1,012.95	0	0	-	0.001910	\$ -
2 Weber County G O Bond Fund	489	75%	1,286	75,581	1,100,238	444,862	0.000262	116.55	0	0	-	0.000269	\$ -
3 Library	489	75%	1,286	75,581	1,100,238	444,862	0.000578	257.13	0	0	-	0.000597	\$ -
5 Weber School District	489	50%	1,286	75,581	1,100,238	296,575	0.006298	1,867.83	0	0	-	0.006693	\$ -
137 Charter School Weber	489	50%	1,286	75,581	1,100,238	296,575	0.000075	22.24	0	0	-	0.000000	\$ -
6 Statewide School Basic Levy	489	50%	1,286	75,581	1,100,238	296,575	0.000000	-	0	0	-	0.000000	\$ -
38 Weber / Morgan Health	489	75%	1,286	75,581	1,100,238	444,862	0.000095	42.26	0	0	-	0.000079	\$ -
55 Paramedic Fund	489	75%	1,286	75,581	1,100,238	444,862	0.000148	65.84	0	0	-	0.000157	\$ -
127 Weber County Redevelopment Summit-Eden													
1 Weber County General Fund	490	75%	12,390,816	546,645	435,238	9,175,679	0.002277	20,893.02	6,342,571	204,704	4,603,400	0.001910	\$ 8,792.49
2 Weber County G O Bond Fund	490	75%	12,390,816	546,645	435,238	9,175,679	0.000262	2,404.03	6,342,571	204,704	4,603,400	0.000269	\$ 1,238.31
3 Library	490	75%	12,390,816	546,645	435,238	9,175,679	0.000578	5,303.54	6,342,571	204,704	4,603,400	0.000597	\$ 2,748.23
5 Weber School District	490	50%	12,390,816	546,645	435,238	6,117,119	0.006298	38,525.62	6,342,571	204,704	3,068,934	0.006693	\$ 20,540.37
137 Charter School Weber	490	50%	12,390,816	546,645	435,238	6,117,119	0.000075	458.78	6,342,571	204,704	3,068,934	0.000000	\$ -
6 Statewide School Basic Levy	490	50%	12,390,816	546,645	435,238	6,117,119	0.000000	-	6,342,571	204,704	3,068,934	0.000000	\$ -
38 Weber / Morgan Health	490	75%	12,390,816	546,645	435,238	9,175,679	0.000095	871.69	6,342,571	204,704	4,603,400	0.000079	\$ 363.67
55 Paramedic Fund	490	75%	12,390,816	546,645	435,238	9,175,679	0.000148	1,358.00	6,342,571	204,704	4,603,400	0.000157	\$ 722.73
127 Weber County Redevelopment Summit-Eden													
1 Weber County General Fund	491	75%	323,615	5,874	62,839	282,789	0.002277	643.91	0	0	-	0.001910	\$ -
2 Weber County G O Bond Fund	491	75%	323,615	5,874	62,839	282,789	0.000262	74.09	0	0	-	0.000269	\$ -
3 Library	491	75%	323,615	5,874	62,839	282,789	0.000578	163.45	0	0	-	0.000597	\$ -
5 Weber School District	491	50%	323,615	5,874	62,839	188,526	0.006298	1,187.34	0	0	-	0.006693	\$ -
137 Charter School Weber	491	50%	323,615	5,874	62,839	188,526	0.000075	14.14	0	0	-	0.000000	\$ -
6 Statewide School Basic Levy	491	50%	323,615	5,874	62,839	188,526	0.000000	-	0	0	-	0.000000	\$ -
38 Weber / Morgan Health	491	75%	323,615	5,874	62,839	282,789	0.000095	26.86	0	0	-	0.000079	\$ -
55 Paramedic Fund	491	75%	323,615	5,874	62,839	282,789	0.000148	41.85	0	0	-	0.000157	\$ -
													\$ 34,405.81
													\$ 161,053.12
													\$ 195,458.94

Tax Area	Buy In	Real Value	Real Base	State Value	State Base	Net Real Value	Cy Rate	Total Ref	Unsec Value	Unsec Base	Net Unsec Value	PY Rate	Unsec Total
127 Weber County Redevelopment Summit-Eden													
1	488	75%	601,713	125,360	357,265	140,197	105,148	0.001908	882.28	1,417	1,063	0.002074	2.20
2	488	75%	601,713	125,360	357,265	140,197	105,148	0.000209	96.64	1,417	1,063	0.000230	0.24
3	488	75%	601,713	125,360	357,265	140,197	105,148	0.000493	227.97	1,417	1,063	0.000526	0.56
5	488	50%	601,713	125,360	238,177	140,197	70,099	0.006038	1,861.36	1,417	709	0.006237	4.42
137	488	50%	601,713	125,360	238,177	140,197	70,099	0.000072	22.20	1,417	709	0.000070	0.05
6	488	50%	601,713	125,360	238,177	140,197	70,099	0.000000	-	1,417	709	0.000000	-
38	488	75%	601,713	125,360	357,265	140,197	105,148	0.000099	45.78	1,417	1,063	0.000086	0.09
55	488	75%	601,713	125,360	357,265	140,197	105,148	0.000145	67.05	1,417	1,063	0.000135	0.14
104	488	50%	601,713	125,360	238,177	140,197	70,099	0.000000	-	1,417	709	0.000000	-
127 Weber County Redevelopment Summit-Eden													
1	489	75%	1,102	1,502	(300)	1,222,560	916,920	0.001908	1,748.91	0	-	0.002074	-
2	489	75%	1,102	1,502	(300)	1,222,560	916,920	0.000209	191.57	0	-	0.000230	-
3	489	75%	1,102	1,502	(300)	1,222,560	916,920	0.000493	451.89	0	-	0.000526	-
5	489	50%	1,102	1,502	(200)	1,222,560	611,280	0.006038	3,689.70	0	-	0.006237	-
137	489	50%	1,102	1,502	(200)	1,222,560	611,280	0.000072	44.00	0	-	0.000070	-
6	489	50%	1,102	1,502	(200)	1,222,560	611,280	0.000000	-	0	-	0.000000	-
38	489	75%	1,102	1,502	(300)	1,222,560	916,920	0.000099	90.75	0	-	0.000086	-
55	489	75%	1,102	1,502	(300)	1,222,560	916,920	0.000145	132.91	0	-	0.000135	-
104	489	50%	1,102	1,502	(200)	1,222,560	611,280	0.000000	-	0	-	0.000000	-
127 Weber County Redevelopment Summit-Eden													
1	490	75%	77,446,367	546,645	57,674,792	526,385	394,789	0.001908	110,796.76	7,292,938	195,681	0.002074	11,039.78
2	490	75%	77,446,367	546,645	57,674,792	526,385	394,789	0.000209	12,136.54	7,292,938	195,681	0.000230	1,224.28
3	490	75%	77,446,367	546,645	57,674,792	526,385	394,789	0.000493	28,628.30	7,292,938	195,681	0.000526	2,799.87
5	490	50%	77,446,367	546,645	38,449,861	526,385	263,193	0.006038	233,749.42	7,292,938	195,681	0.006237	22,132.80
137	490	50%	77,446,367	546,645	38,449,861	526,385	263,193	0.000072	2,787.34	7,292,938	195,681	0.000070	248.40
6	490	50%	77,446,367	546,645	38,449,861	526,385	263,193	0.000000	-	7,292,938	195,681	0.000000	-
38	490	75%	77,446,367	546,645	57,674,792	526,385	394,789	0.000099	5,748.89	7,292,938	195,681	0.000086	457.77
55	490	75%	77,446,367	546,645	57,674,792	526,385	394,789	0.000145	8,420.09	7,292,938	195,681	0.000135	718.60
104	490	50%	77,446,367	546,645	38,449,861	526,385	263,193	0.000000	-	7,292,938	195,681	0.000000	-
127 Weber County Redevelopment Summit-Eden													
1	491	75%	72,730,891	5,874	54,543,763	143,234	107,426	0.001908	104,274.47	29,637	22,228	0.002074	46.10
2	491	75%	72,730,891	5,874	54,543,763	143,234	107,426	0.000209	11,422.10	29,637	22,228	0.000230	5.11
3	491	75%	72,730,891	5,874	54,543,763	143,234	107,426	0.000493	26,943.04	29,637	22,228	0.000526	11.69
5	491	50%	72,730,891	5,874	36,362,509	143,234	71,617	0.006038	219,889.25	29,637	14,819	0.006237	92.42
137	491	50%	72,730,891	5,874	36,362,509	143,234	71,617	0.000072	2,623.26	29,637	14,819	0.000070	1.04
6	491	50%	72,730,891	5,874	36,362,509	143,234	71,617	0.000000	-	29,637	14,819	0.000000	-
38	491	75%	72,730,891	5,874	54,543,763	143,234	107,426	0.000099	5,410.47	29,637	22,228	0.000086	1.91
55	491	75%	72,730,891	5,874	54,543,763	143,234	107,426	0.000145	7,824.42	29,637	22,228	0.000135	3.00
104	491	50%	72,730,891	5,874	36,362,509	143,234	71,617	0.000000	-	29,637	14,819	0.000000	-

Tax Area	Buy In	Real Value	Real Base	State Value	State Base	Net Real Value	Ct Rate	Total Real	Unsec Value	Unsec Base	Net Unsec Value	PY Rate	Unsec Total
127 Weber County Redev Summit-Eden													
1 Weber County General Fund	488	75%	738,962	125,360	460,202	157,272	0.001720	\$ 994.43	0	0	0	0.001908	\$ -
2 Weber County G O Bond Fund	488	75%	738,962	125,360	460,202	157,272	0.000185	\$ 106.96	0	0	0	0.000209	\$ -
3 Library	488	75%	738,962	125,360	460,202	157,272	0.000458	\$ 264.80	0	0	0	0.000493	\$ -
38 Weber / Morgan Health	488	75%	738,962	125,360	460,202	157,272	0.000092	\$ 53.19	0	0	0	0.000099	\$ -
55 Paramedic Fund	488	75%	738,962	125,360	460,202	157,272	0.000135	\$ 78.05	0	0	0	0.000145	\$ -
146 Weber County Flood Control	488	75%	738,962	125,360	460,202	157,272	0.000026	\$ 15.03	0	0	0	0.000000	\$ -
5 Weber School District	488	50%	738,962	125,360	306,801	157,272	0.005806	\$ 2,237.85	0	0	0	0.006038	\$ -
137 Charter School Weber	488	50%	738,962	125,360	306,801	157,272	0.000062	\$ 23.90	0	0	0	0.000072	\$ -
6 Statewide School Basic Levy	488	50%	738,962	125,360	306,801	157,272	0.000000	\$ -	0	0	0	0.000000	\$ -
104 Weber School Judgment Levy	488	50%	738,962	125,360	306,801	157,272	0.000000	\$ -	0	0	0	0.000000	\$ -
127 Weber County Redev Summit-Eden													
1 Weber County General Fund	489	75%	1,102	1,502	(300)	999,465	0.001720	\$ 1,288.79	0	0	0	0.001908	\$ -
2 Weber County G O Bond Fund	489	75%	1,102	1,502	(300)	999,465	0.000185	\$ 138.62	0	0	0	0.000209	\$ -
3 Library	489	75%	1,102	1,502	(300)	999,465	0.000458	\$ 343.18	0	0	0	0.000493	\$ -
38 Weber / Morgan Health	489	75%	1,102	1,502	(300)	999,465	0.000092	\$ 68.94	0	0	0	0.000099	\$ -
55 Paramedic Fund	489	75%	1,102	1,502	(300)	999,465	0.000135	\$ 101.16	0	0	0	0.000145	\$ -
146 Weber County Flood Control	489	75%	1,102	1,502	(300)	999,465	0.000026	\$ 19.48	0	0	0	0.000000	\$ -
5 Weber School District	489	50%	1,102	1,502	(200)	999,465	0.005806	\$ 2,900.29	0	0	0	0.006038	\$ -
137 Charter School Weber	489	50%	1,102	1,502	(200)	999,465	0.000062	\$ 30.97	0	0	0	0.000072	\$ -
6 Statewide School Basic Levy	489	50%	1,102	1,502	(200)	999,465	0.000000	\$ -	0	0	0	0.000000	\$ -
104 Weber School Judgment Levy	489	50%	1,102	1,502	(200)	999,465	0.000000	\$ -	0	0	0	0.000000	\$ -
127 Weber County Redev Summit-Eden													
1 Weber County General Fund	490	75%	70,735,182	546,645	52,641,403	541,292	0.001720	\$ 91,241.48	7,196,312	195,681	5,250,473	0.001908	\$ 10,017.90
2 Weber County G O Bond Fund	490	75%	70,735,182	546,645	52,641,403	541,292	0.000185	\$ 9,813.76	7,196,312	195,681	5,250,473	0.000209	\$ 1,087.35
3 Library	490	75%	70,735,182	546,645	52,641,403	541,292	0.000458	\$ 24,295.70	7,196,312	195,681	5,250,473	0.000493	\$ 2,588.48
38 Weber / Morgan Health	490	75%	70,735,182	546,645	52,641,403	541,292	0.000092	\$ 4,880.36	7,196,312	195,681	5,250,473	0.000099	\$ 519.80
55 Paramedic Fund	490	75%	70,735,182	546,645	52,641,403	541,292	0.000135	\$ 7,161.40	7,196,312	195,681	5,250,473	0.000145	\$ 761.32
146 Weber County Flood Control	490	75%	70,735,182	546,645	52,641,403	541,292	0.000026	\$ 1,379.23	7,196,312	195,681	5,250,473	0.000000	\$ -
5 Weber School District	490	50%	70,735,182	546,645	35,094,269	541,292	0.005806	\$ 205,328.69	7,196,312	195,681	3,500,316	0.006038	\$ 211,134.90
137 Charter School Weber	490	50%	70,735,182	546,645	35,094,269	541,292	0.000062	\$ 2,192.62	7,196,312	195,681	3,500,316	0.000072	\$ 252.02
6 Statewide School Basic Levy	490	50%	70,735,182	546,645	35,094,269	541,292	0.000000	\$ -	7,196,312	195,681	3,500,316	0.000000	\$ -
104 Weber School Judgment Levy	490	50%	70,735,182	546,645	35,094,269	541,292	0.000000	\$ -	7,196,312	195,681	3,500,316	0.000000	\$ -
127 Weber County Redev Summit-Eden													
1 Weber County General Fund	491	75%	108,722,240	5,874	81,537,275	156,209	0.001720	\$ 1,440,445.62	30,339	0	22,754	0.001908	\$ 43.42
2 Weber County G O Bond Fund	491	75%	108,722,240	5,874	81,537,275	156,209	0.000185	\$ 15,106.07	30,339	0	22,754	0.000209	\$ 4.76
3 Library	491	75%	108,722,240	5,874	81,537,275	156,209	0.000458	\$ 37,897.73	30,339	0	22,754	0.000493	\$ 11.22
38 Weber / Morgan Health	491	75%	108,722,240	5,874	81,537,275	156,209	0.000092	\$ 7,512.21	30,339	0	22,754	0.000099	\$ 2.25
55 Paramedic Fund	491	75%	108,722,240	5,874	81,537,275	156,209	0.000135	\$ 11,023.35	30,339	0	22,754	0.000145	\$ 3.30
146 Weber County Flood Control	491	75%	108,722,240	5,874	81,537,275	156,209	0.000026	\$ 2,128.02	30,339	0	22,754	0.000000	\$ -
5 Weber School District	491	50%	108,722,240	5,874	54,358,183	156,209	0.005806	\$ 316,057.09	30,339	0	15,170	0.006038	\$ 91.59
137 Charter School Weber	491	50%	108,722,240	5,874	54,358,183	156,209	0.000062	\$ 3,375.05	30,339	0	15,170	0.000072	\$ 1.09
6 Statewide School Basic Levy	491	50%	108,722,240	5,874	54,358,183	156,209	0.000000	\$ -	30,339	0	15,170	0.000000	\$ -
104 Weber School Judgment Levy	491	50%	108,722,240	5,874	54,358,183	156,209	0.000000	\$ -	30,339	0	15,170	0.000000	\$ -
127 Weber County Redev Summit-Eden													
												\$ 887,998.99	\$ 36,529.40

Forgot to remove Centrally Assessed. Need to make adjustment for \$9,078.35 in 2021

Weber County Redevelopment Agency

Project Area: Weber County / Summit

Tax Incentive Summary and Proposed Budget

Base Year: 2012	YEAR 1	YEAR 2	YEAR 3	YEAR 4	YEAR 5	YEAR 6	YEAR 7	YEAR 8	YEAR 9	YEAR 10	YEAR 11	YEAR 12	YEAR 13	YEAR 14	YEAR 15	YEAR 16	YEAR 17	YEAR 18	YEAR 19	YEAR 20
Real Property Value:	1,234,953	1,234,953	1,234,953	679,381	679,381	679,381	679,381	679,381	679,381	679,381	679,381	679,381	679,381	679,381	679,381	679,381	679,381	679,381	679,381	679,381
Personal Property Values:	204,704	204,704	204,704	195,681	195,681	195,681	195,681	195,681	195,681	195,681	195,681	195,681	195,681	195,681	195,681	195,681	195,681	195,681	195,681	195,681
Totally Areas: 488, 489, 490, 491	1,439,657	1,439,657	1,439,657	875,062	875,062	875,062	875,062	875,062	875,062	875,062	875,062	875,062	875,062	875,062	875,062	875,062	875,062	875,062	875,062	875,062

Buy In:	YEAR 1	YEAR 2	YEAR 3	YEAR 4	YEAR 5	YEAR 6	YEAR 7	YEAR 8	YEAR 9	YEAR 10	YEAR 11	YEAR 12	YEAR 13	YEAR 14	YEAR 15	YEAR 16	YEAR 17	YEAR 18	YEAR 19	YEAR 20
Weber County:	75%	75%	75%	75%	75%	75%	75%	75%	75%	75%	75%	75%	75%	75%	75%	75%	75%	75%	75%	75%
Weber County School Dist:	50%	50%	50%	50%	50%	50%	50%	50%	50%	50%	50%	50%	50%	50%	50%	50%	50%	50%	50%	50%

Total Taxable Value:

Real Property Taxable Values:	29,457,703	61,771,951	152,812,449	180,197,486
Personal Property Taxable Values:	5,342,571	7,670,774	7,323,992	7,226,651
Total	35,800,274	69,442,725	160,136,441	187,424,137

Property Tax Rates:

Real Property: Weber County	0.00360	0.00351	0.002854	0.002616
Personal Property: Weber County	0.003012	0.00360	0.003051	0.002854
Real Property: Weber School	0.006373	0.006307	0.006110	0.005868
Personal Property: Weber School	0.006693	0.006373	0.006307	0.006110

New Property Tax (at less base rate):

Real Property: Weber County	\$ 94,828.44	\$ 184,698.38	\$ 432,602.17	\$ 469,619.36
Personal Property: Weber County	\$ 18,487.26	\$ 25,086.00	\$ 21,720.95	\$ 20,066.39
Real Property: WC School Dist	\$ 179,863.59	\$ 361,806.65	\$ 926,138.50	\$ 1,053,412.24
Personal Property: WC School Dist	\$ 41,080.74	\$ 47,581.26	\$ 44,901.35	\$ 42,959.23
Total:	\$ 334,260.02	\$ 639,172.49	\$ 1,425,362.97	\$ 1,586,057.22

Increment:

Weber County Increment to Agency	\$ 84,986.77	\$ 157,338.28	\$ 340,742.34	\$ 367,264.31
Weber School Increment to Agency	\$ 110,472.16	\$ 214,694.06	\$ 485,519.92	\$ 548,185.73
Total:	\$ 195,458.94	\$ 372,032.34	\$ 826,262.27	\$ 915,450.05

Less: Administrative Fee of 2%:

From County Increment	\$ 43,168.95	\$ 7,440.65	\$ 16,525.25	\$ 18,309.00
Adjustments	0.00	(39,259.77)	0.00	(9,046.67)
Total:	\$ 43,168.95	\$ (31,819.12)	\$ 16,525.25	\$ 9,262.33

Increment Available to RDA:

Weber County Increment to Agency	\$ 41,817.82	\$ 149,897.64	\$ 324,217.10	\$ 358,001.98
Personal Property Tax Rate is Prior Year Rate	\$ 110,472.16	\$ 253,953.82	\$ 485,519.92	\$ 548,185.73
Weber School Increment to Agency	\$ 152,289.99	\$ 403,851.46	\$ 809,737.02	\$ 906,187.72
Total Paid to RDA:	\$ 155,349.89	\$ 406,961.37	\$ 812,613.88	\$ 906,187.72
Correct Amount	\$ 155,349.89	\$ 406,961.37	\$ 812,613.88	\$ 906,187.72
Difference	\$ 3,059.90	\$ 3,109.91	\$ 2,876.86	\$ 9,046.67

Base Year Adjusted to Agree With Participation Agmt. (Originally was to have Included Centrally Assessed) Correction in Increment Made.

Personal Property Tax Rate is Prior Year Rate.

Amended Agmt - 2% of Total But Taken From Weber County's Increment. Correction in Increment Made.

CREDIT TO MAKE UP FOR INCORRECT BASE YEAR (CENTRALLY ASSESSED ISSUE)

FORGOTT TO REMOVE CENTRALLY ASSESSED FROM THE 700 REPORT IN 2020 -- NEED TO ADJUST INCREMENT IN 2021 (\$9,078.35)

Cumulative Totals:	\$	2,309,204		
Cumulative Totals:	\$	2,272,066		